

STAR-GS

Star-GS is a type of security turnstiles with transparent, tempered glass leaves. Elegant design provided by a combination of stainless steel housing and transparent glass leaves makes it suitable for installation at entrances with the requirements of sophisticated product appearance. Indoor application by default.

HALF-HEIGHT TURNSTILE



STYLISH & PRACTICAL SOLUTION

FOR SAFE AND SECURITY



Key features:

- Steel tubular leaves made of stainless steel that provides a high degree of resistance to vandalism
- Whisper quiet, low noise operation
- Successful combination of affordable price and high quality
- Possibility of a barrier gate customization
- Can be integrated with any type of access control systems
- Low power consumption
- Wired remote control panel is in standard kit
- Steadfast housing suitable for high traffic areas



www.tiso.global

+380 (44) 291-21-11

sales@tiso.global



Technical Specifications:

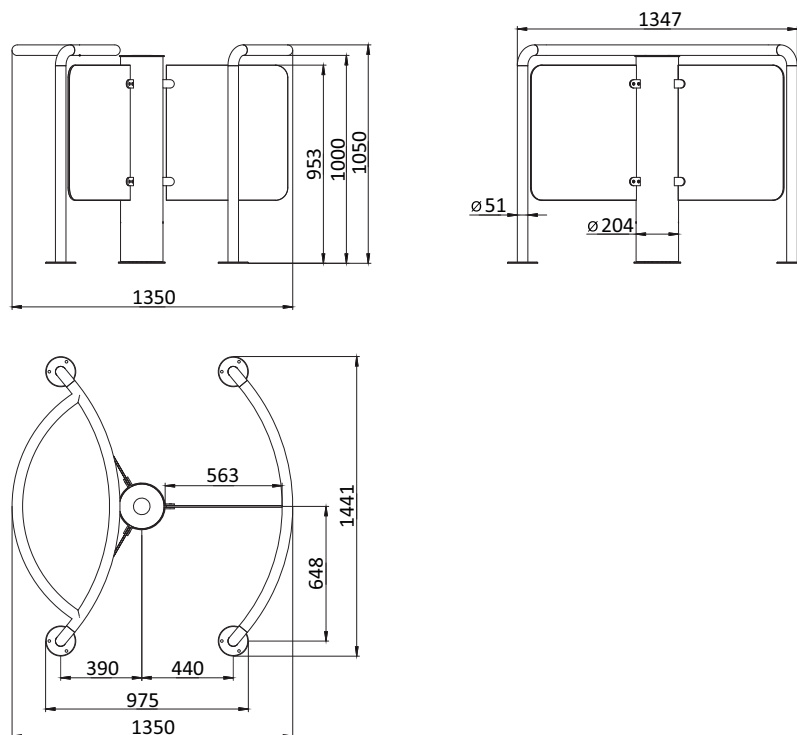
Model	Star-GS
Width, mm	1350
Length, mm	1441
Height, mm	1050
Passage width, mm	563
Mechanism	Servo-driven
Blocking system	Two electromagnetic stoppers
Emergency mode	Free pass in both directions
Power fail	Fail-safe (rotor is unlocked- standard)
MCBF, cycles	5 000 000
MTTR, min	< 25

Electrical Specifications:

Maximum power consumption, W	55
Voltage	From the AC (100-240)V, 50/60Hz; from a DC source 12 V

Finishing

Standard housing	Brushed SS AISI 304
Available housing	Brushed SS AISI 316; Polished SS AISI 304; Polished SS AISI 316; Powder coated RAL



Specifications are subject to change without prior notice.

